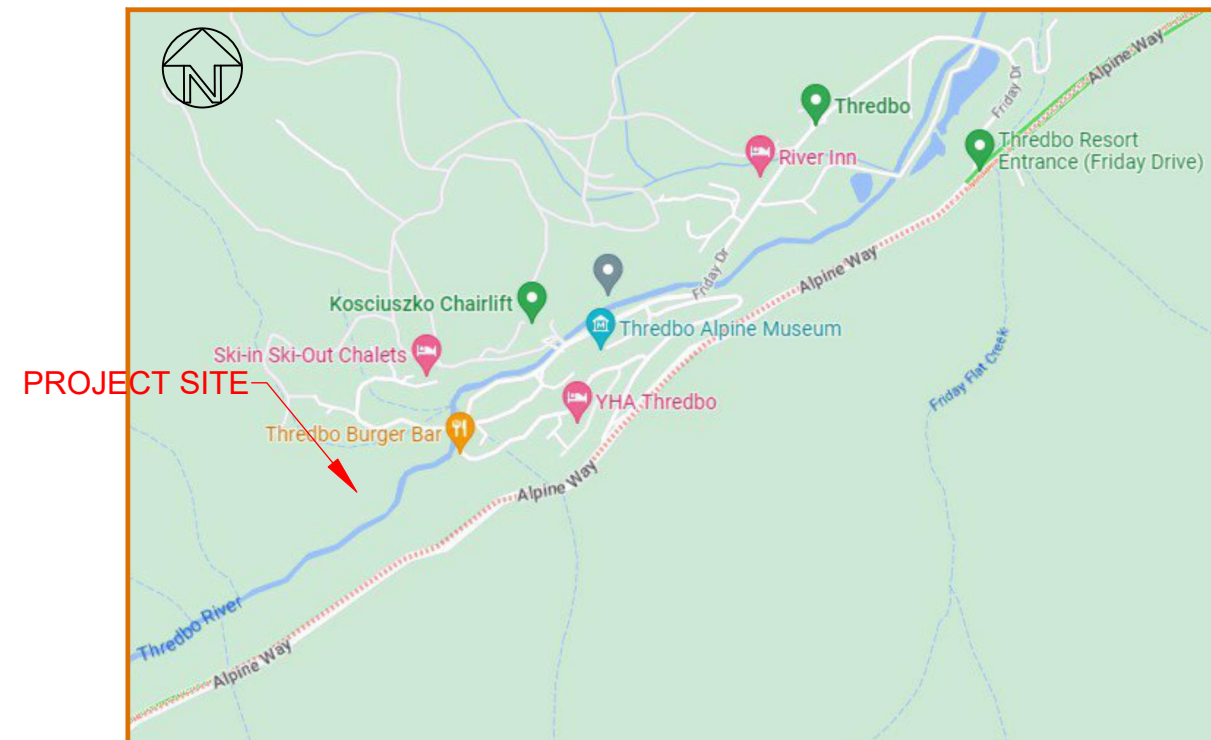




Kosciuszko Thredbo Pty Ltd  
 Proposed Golf Course Subdivision  
 THREDBO NSW 2625  
 CLM CiViL Project No. U183



Locality Plan - Not to Scale

DRAWING LIST	
Sheet No:	Description
1	Overall Site Plan
2 - 4	Detailed Site Plan. Sheets 1 - 3
5 - 7	Road Long Sections. Sheets 1 - 3
8 - 10	Road Cross Sections. Sheets 1 - 3
11 - 12	Sewer long Sections. Sheets 1 and 2

Gregory MW Miller  
 MIEAust  
 Membership No. 1144751

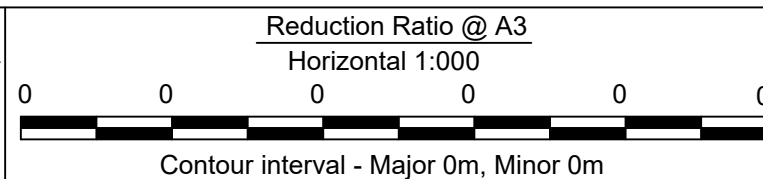
NOT FOR CONSTRUCTION



CLM CiViL Engineering  
 205 Bobundara Road  
 BERRIDALE NSW 2628  
 PH: 0427 886 623  
 www.clmcivil.com.au



Robert Staples & Associates  
 Staplescorp Pty Ltd ABN 42 619 974 467  
 Consulting Engineers and Project Managers  
 Email: robertstaples@spin.net.au

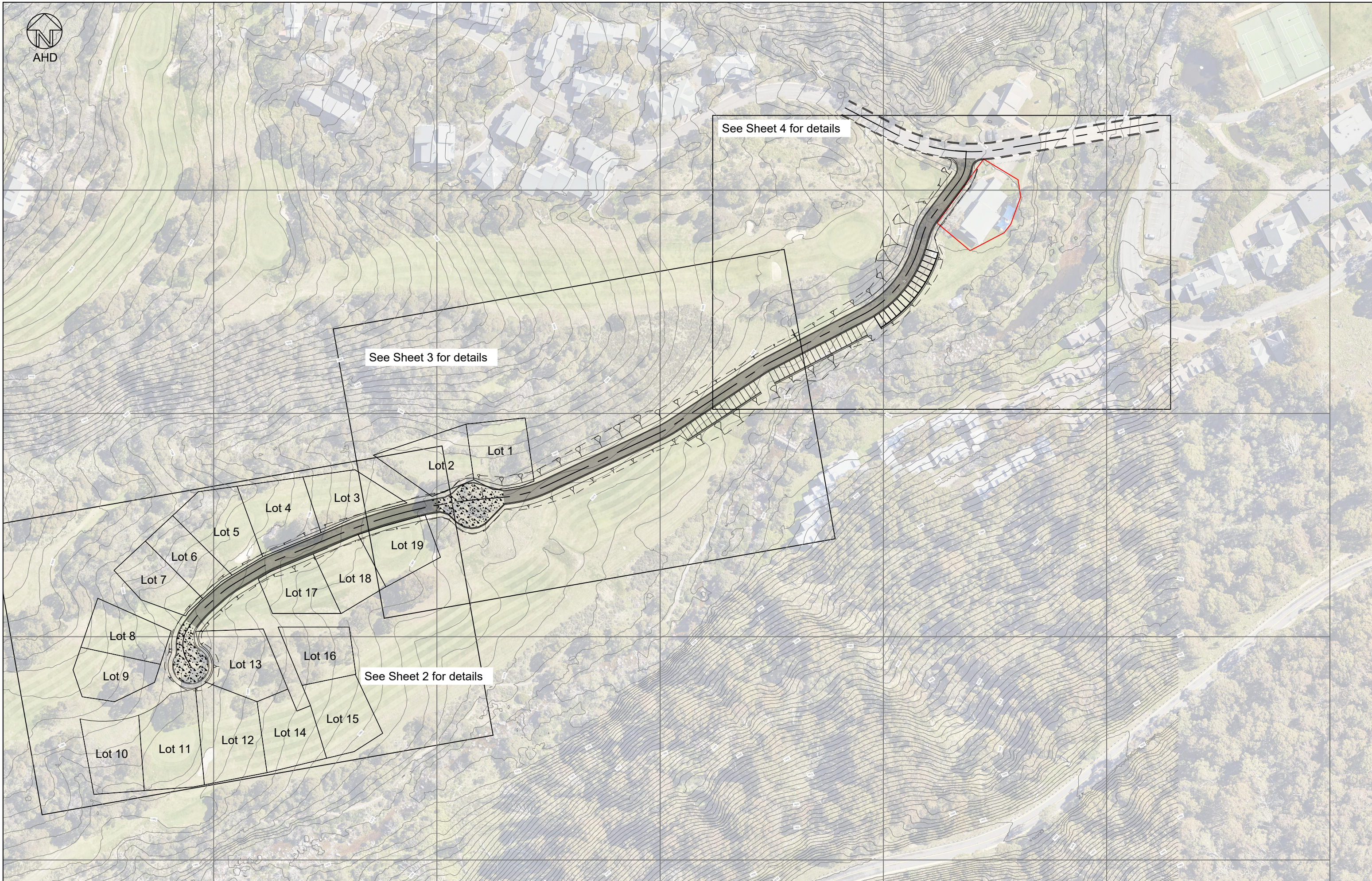


Proposed Golf Course Subdivision  
 THREDBO NSW 2625  
 Cover Sheet

DATE: 27/07/2023  
 JOB NUMBER  
 U-183-E



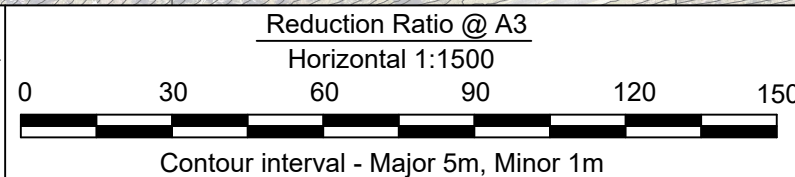
AHD



CLM CIVIL Engineering  
205 Bobundara Road  
BERRIDALE NSW 2628  
PH: 0427 886 623  
www.clmcivil.com.au












Robert Staples & Associates  
Staplescorp Pty Ltd ABN 42 619 974 467  
Consulting Engineers and Project Managers  
Email: robertstaples@spin.net.au



Proposed Golf Course Subdivision  
THREDBO NSW 2625  
Overall site plan

DATE: 27/07/2023	
JOB NUMBER	SHEET
U-183-E	1 of 12

**LEGEND:**

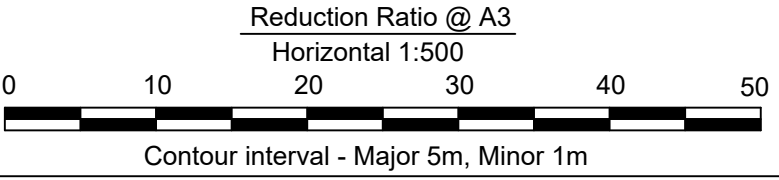
-  Gravity sewer reticulation
-  Proposed sewer manhole
-  Water
-  Electricity
-  Communications
-  Gas
-  Stormwater drainage
-  Natural surface contour
-  Current overland flow path



CLM CIVIL Engineering  
 205 Bobundara Road  
 BERRIDALE NSW 2628  
 PH: 0427 886 623  
 www.clmcivil.com.au



**Robert Staples & Associates**  
 Staplescorp Pty Ltd ABN 42 619 974 467  
**Consulting Engineers and Project Managers**  
 Email: robertstaples@spin.net.au



Proposed Golf Course Subdivision  
 THREDBO NSW 2625  
 Detailed Site Plan Sheet 1

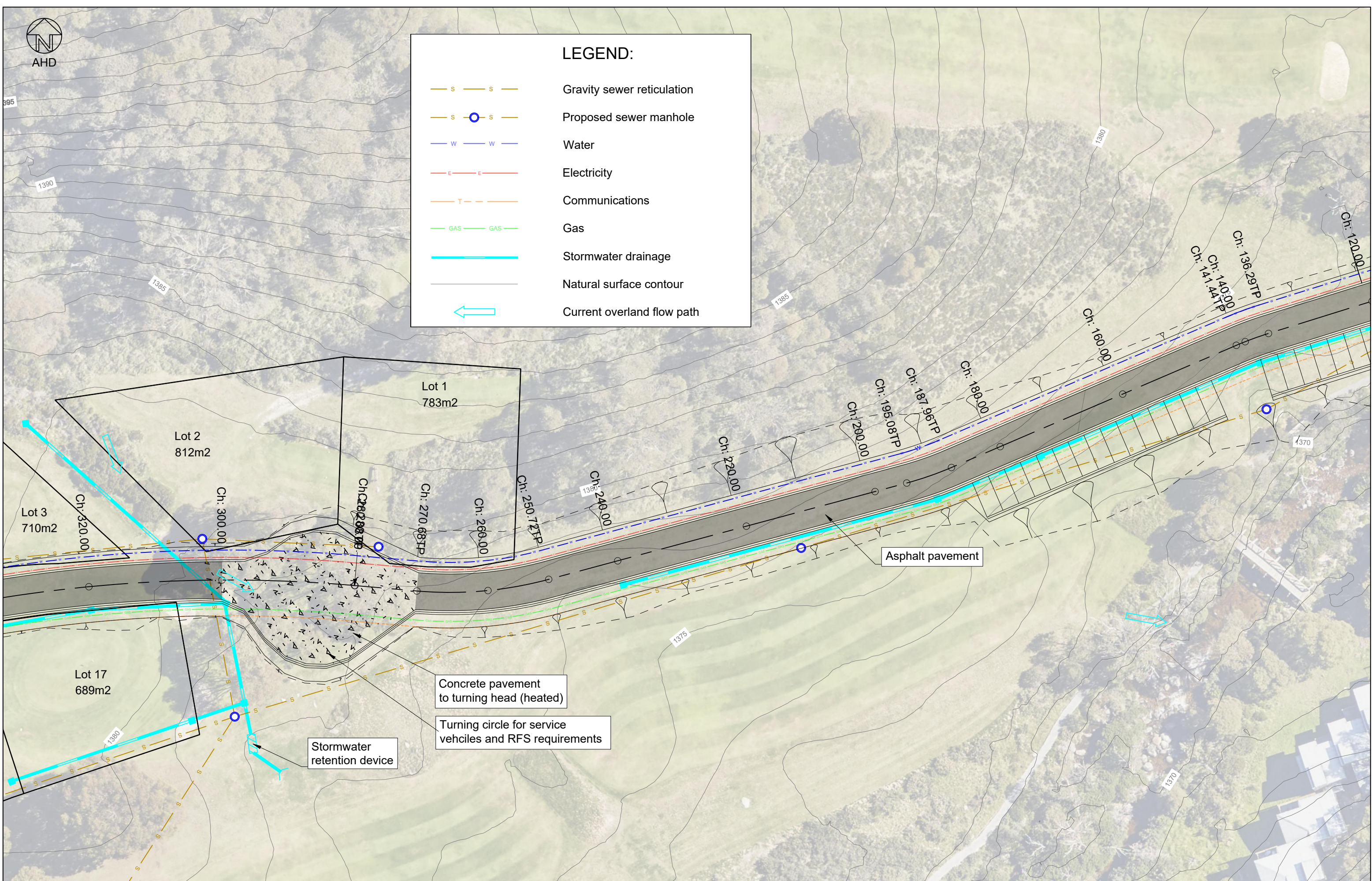
DATE: 27/07/2023	
JOB NUMBER	SHEET
U-183-E	2 of 12



AHD

**LEGEND:**

- Gravity sewer reticulation
- Proposed sewer manhole
- Water
- Electricity
- Communications
- Gas
- Stormwater drainage
- Natural surface contour
- Current overland flow path



**CLM CIVIL**  
 CLM CIVIL Engineering  
 205 Bobundara Road  
 BERRIDALE NSW 2628  
 PH: 0427 886 623  
 www.clmcivil.com.au

**RS & A**  
 Robert Staples & Associates  
 Staplescorp Pty Ltd ABN 42 619 974 467  
 Consulting Engineers and Project Managers  
 Email: robertstaples@spin.net.au

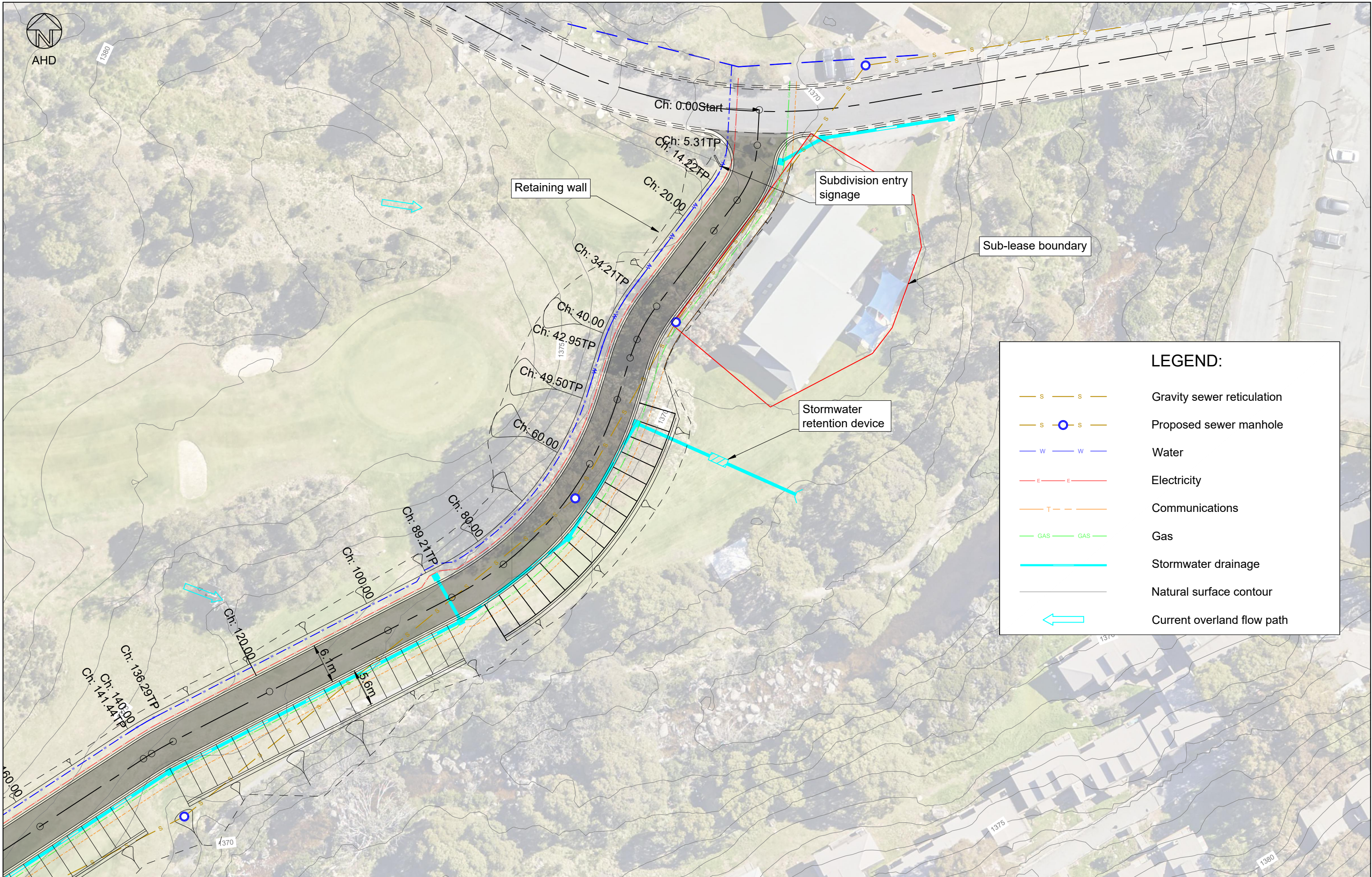
Reduction Ratio @ A3  
 Horizontal 1:500  
 0 10 20 30 40 50  
 Contour interval - Major 5m, Minor 1m

Proposed Golf Course Subdivision  
 THREDBO NSW 2625  
 Detailed Site Plan Sheet 2

DATE: 27/07/2023  
 JOB NUMBER SHEET  
 U-183-E 3 of 12



AHD



**LEGEND:**

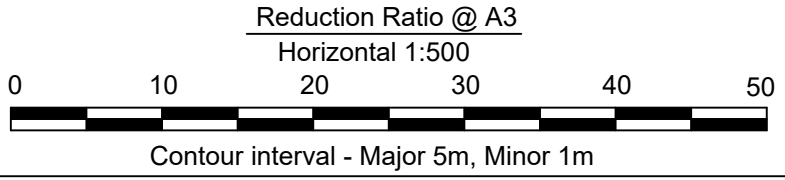
- S — S — S Gravity sewer reticulation
- S — S — S Proposed sewer manhole
- W — W — W Water
- E — E — E Electricity
- T — T — T Communications
- GAS — GAS — GAS Gas
- Stormwater drainage
- Natural surface contour
- ← Current overland flow path



CLM CIVIL Engineering  
 205 Bobundara Road  
 BERRIDALE NSW 2628  
 PH: 0427 886 623  
 www.clmcivil.com.au

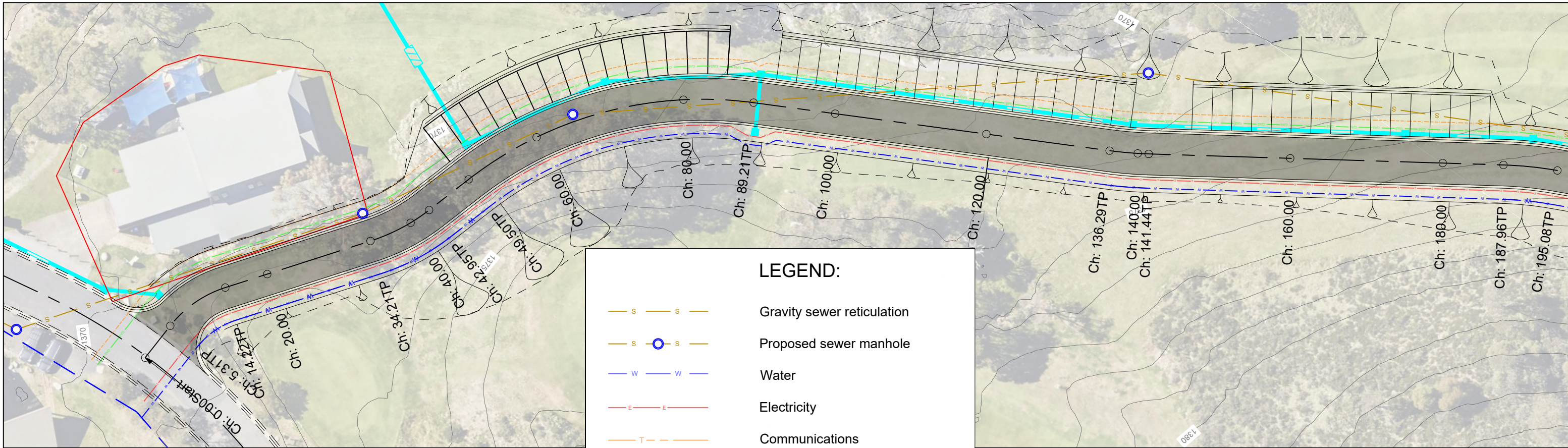


**Robert Staples & Associates**  
 Staplescorp Pty Ltd ABN 42 619 974 467  
**Consulting Engineers and Project Managers**  
 Email: robertstaples@spin.net.au



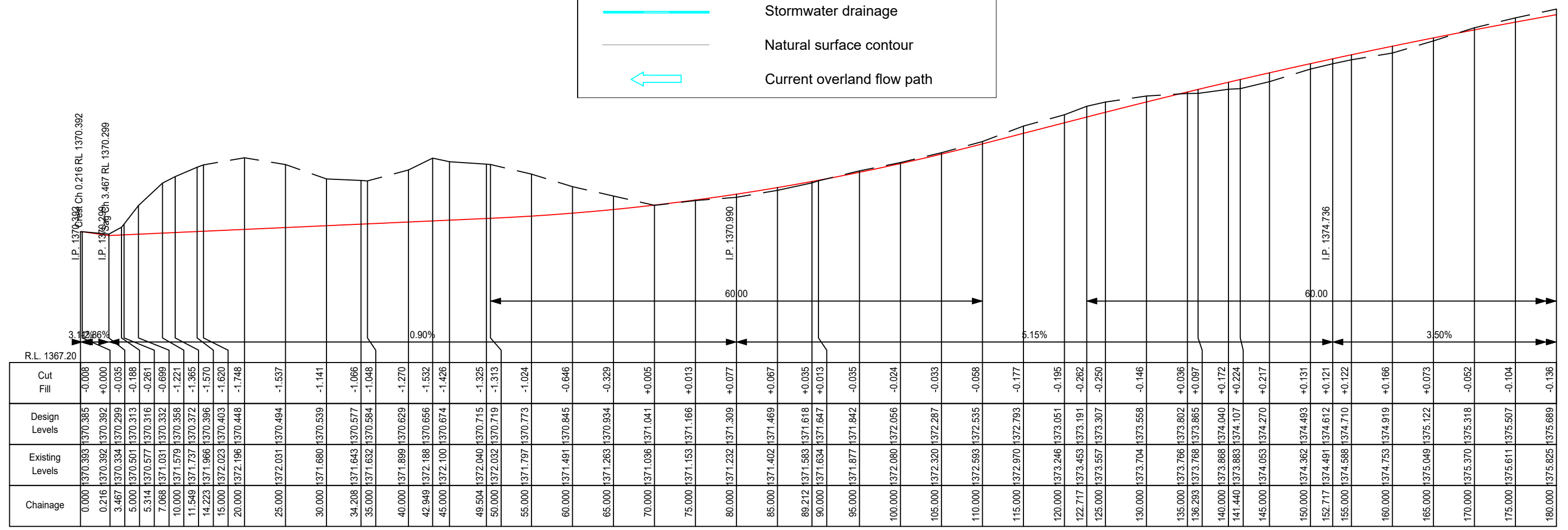
Proposed Golf Course Subdivision  
 THREDBO NSW 2625  
 Detailed Site Plan Sheet 3

DATE: 27/07/2023	
JOB NUMBER	SHEET
U-183-E	4 of 12



**LEGEND:**

- Gravity sewer reticulation
- Proposed sewer manhole
- Water
- Electricity
- Communications
- Gas
- Stormwater drainage
- Natural surface contour
- Current overland flow path



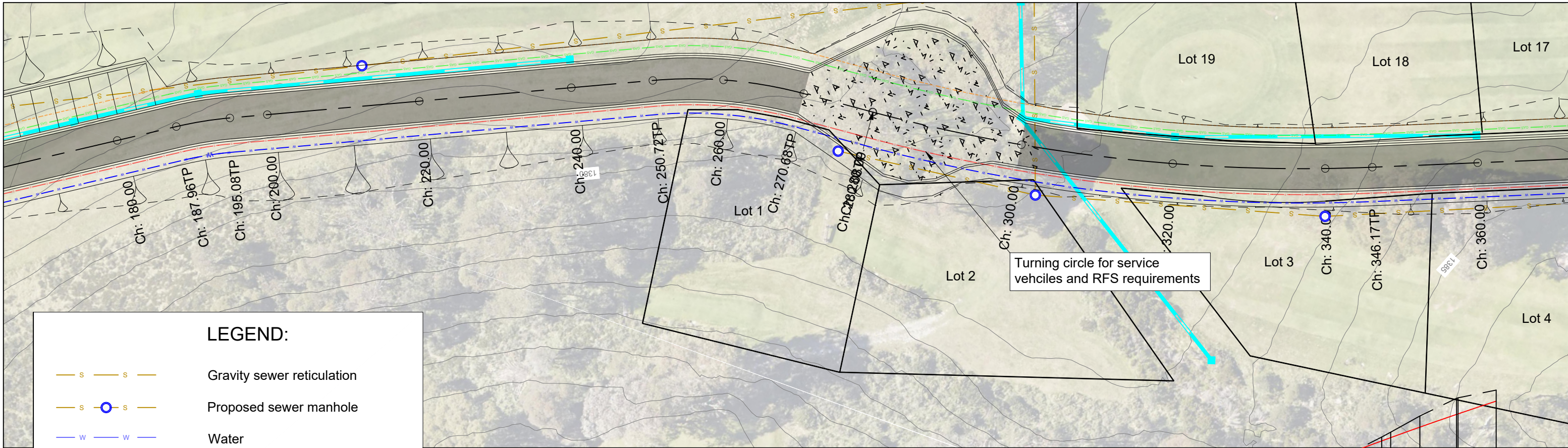
**CLM CIVIL**  
 CLM CIVIL Engineering  
 205 Bobundara Road  
 BERRIDALE NSW 2628  
 PH: 0427 886 623  
 www.clmcivil.com.au

**RS & A**  
 Robert Staples & Associates  
 Staplescorp Pty Ltd ABN 42 619 974 467  
 Consulting Engineers and Project Managers  
 Email: robertstaples@spin.net.au

Reduction Ratio @ A3  
 H 1:500 V 1:100  
 0 10 20 30 40 50

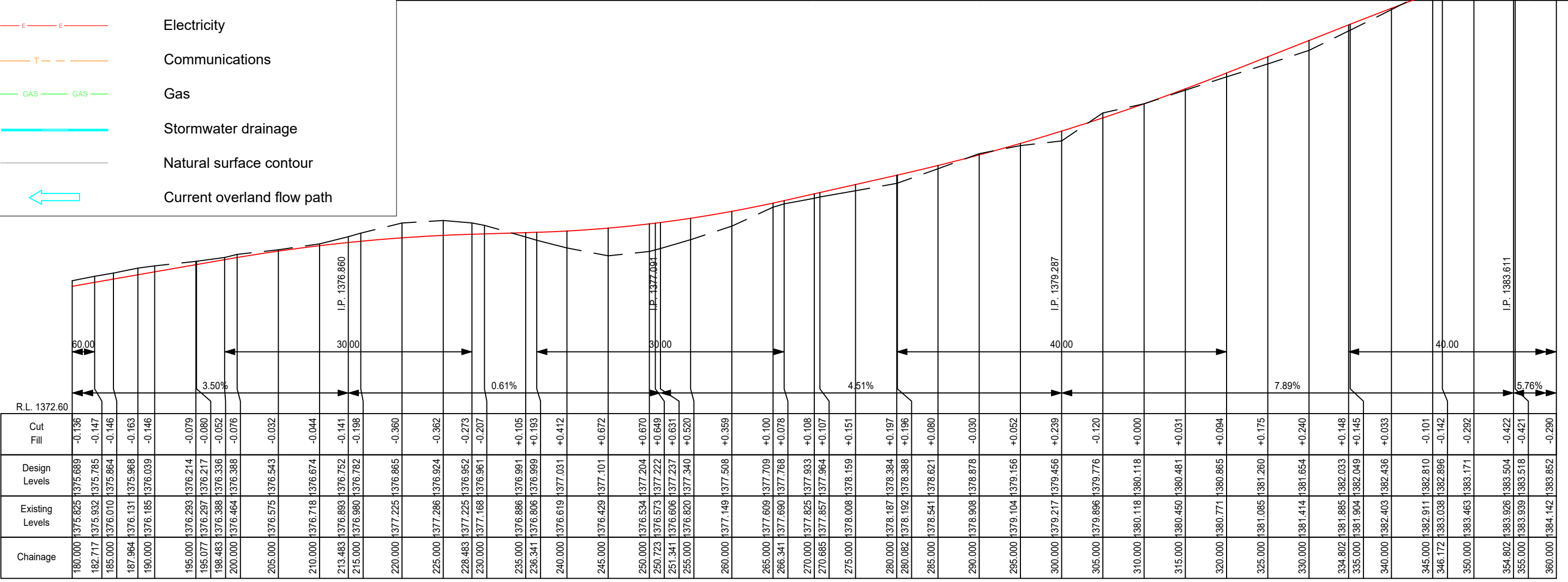
Proposed Golf Course Subdivision  
 THREDBO NSW 2625  
 Road Long Section Ch00 to Ch180

DATE: 27/07/2023  
 JOB NUMBER: U-183-E  
 SHEET: 5 of 12



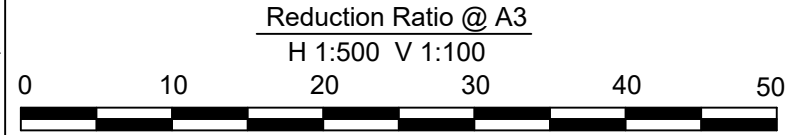
**LEGEND:**

- Gravity sewer reticulation
- Proposed sewer manhole
- Water
- Electricity
- Communications
- Gas
- Stormwater drainage
- Natural surface contour
- Current overland flow path



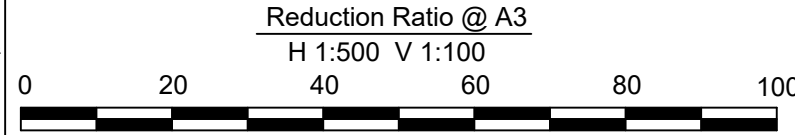
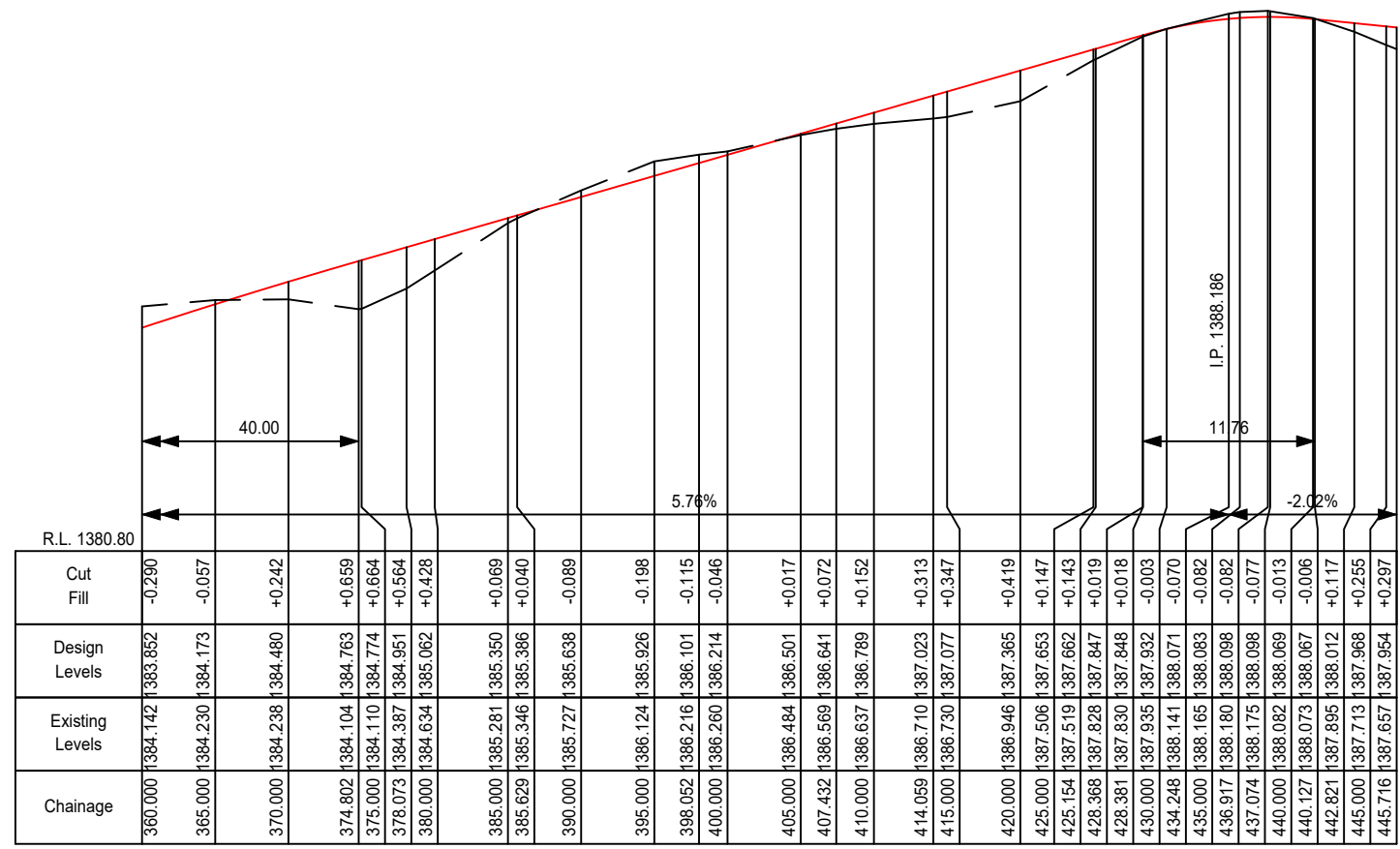
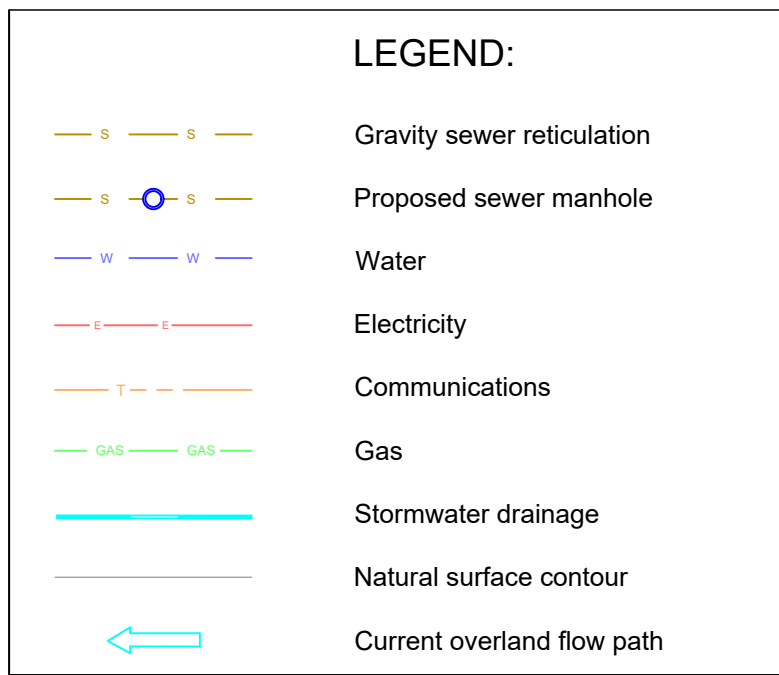
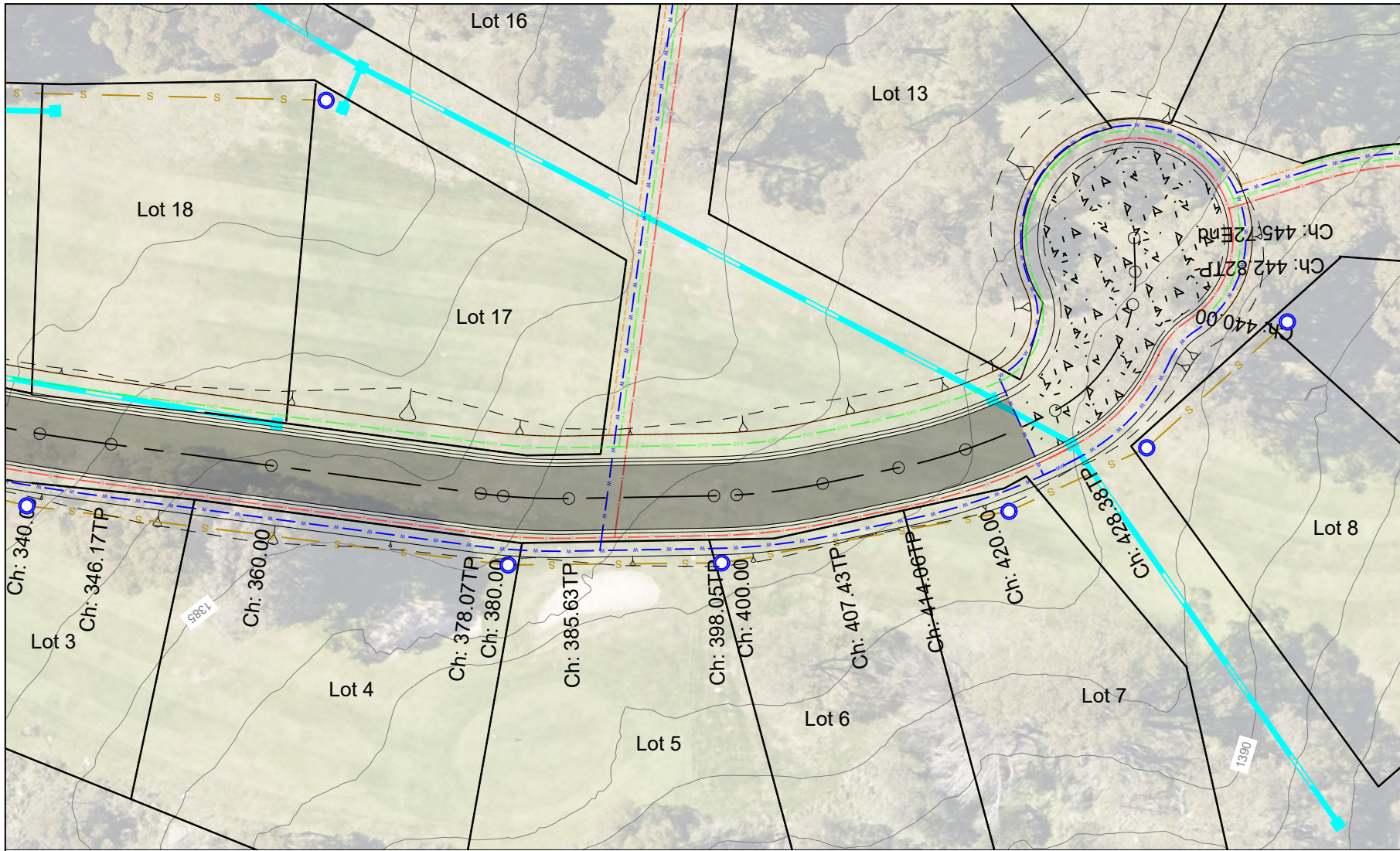
**CLM CIVIL**  
 CLM CIVIL Engineering  
 205 Bobundara Road  
 BERRIDALE NSW 2628  
 PH: 0427 886 623  
 www.clmcivil.com.au

**RS & A**  
 Robert Staples & Associates  
 Staplescorp Pty Ltd ABN 42 619 974 467  
 Consulting Engineers and Project Managers  
 Email: robertstaples@spin.net.au

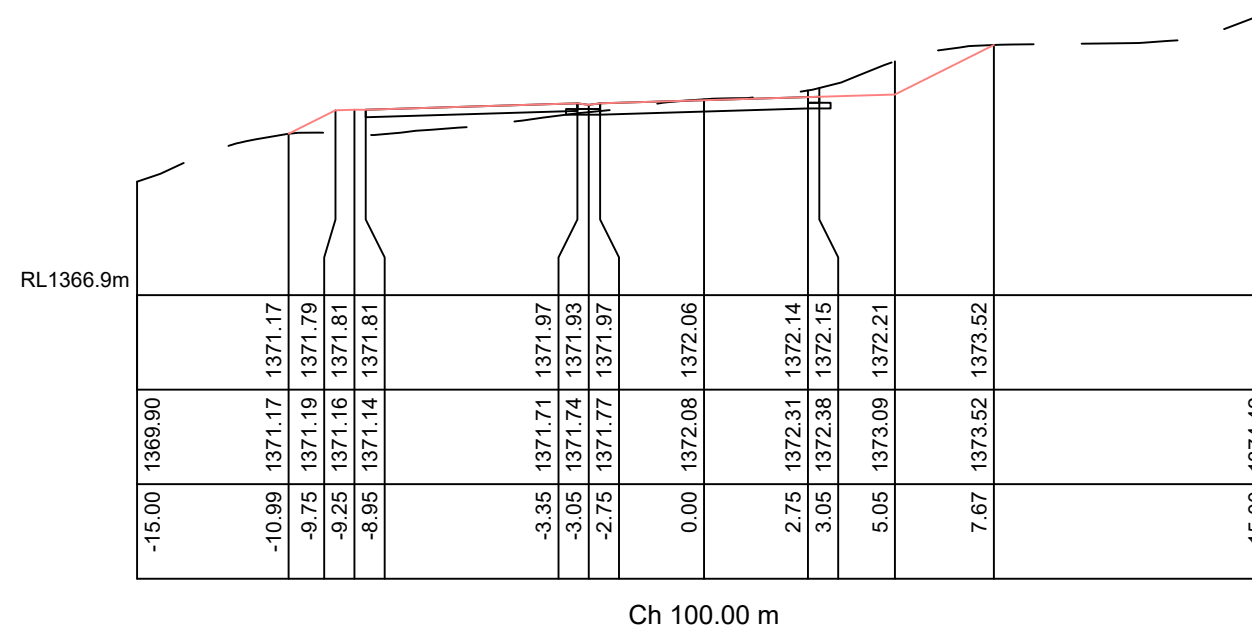
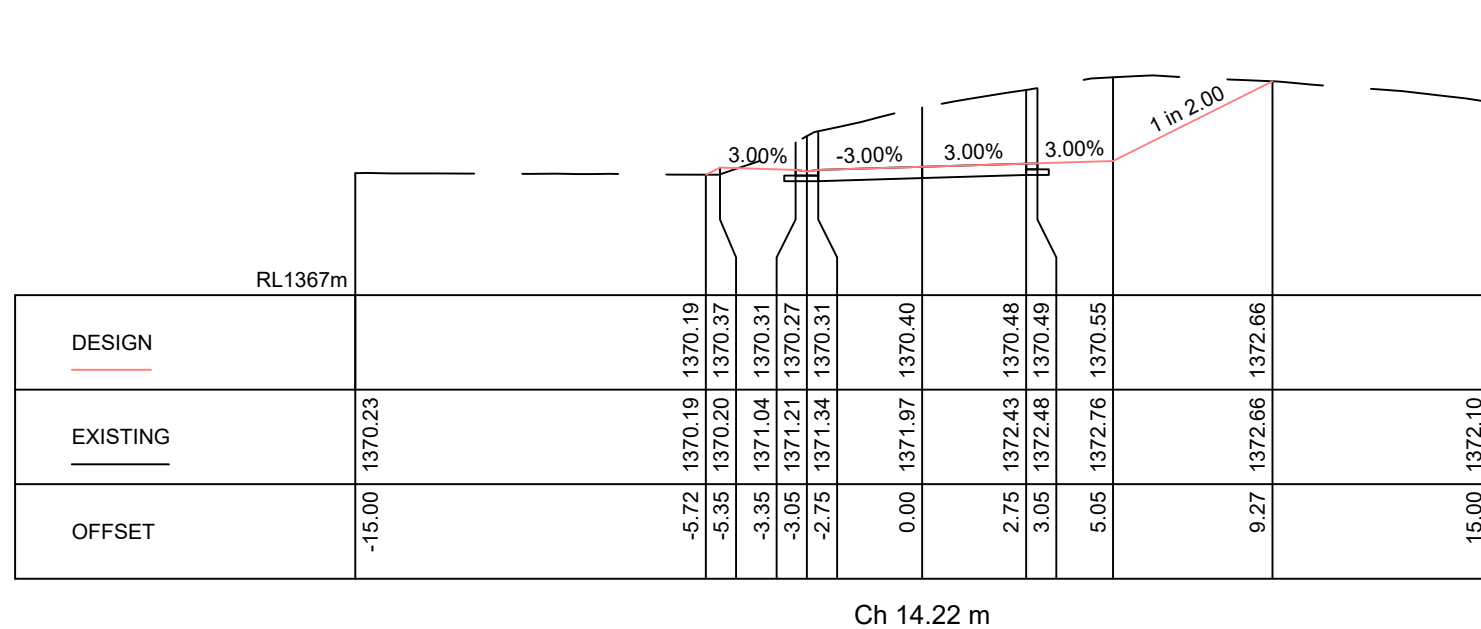
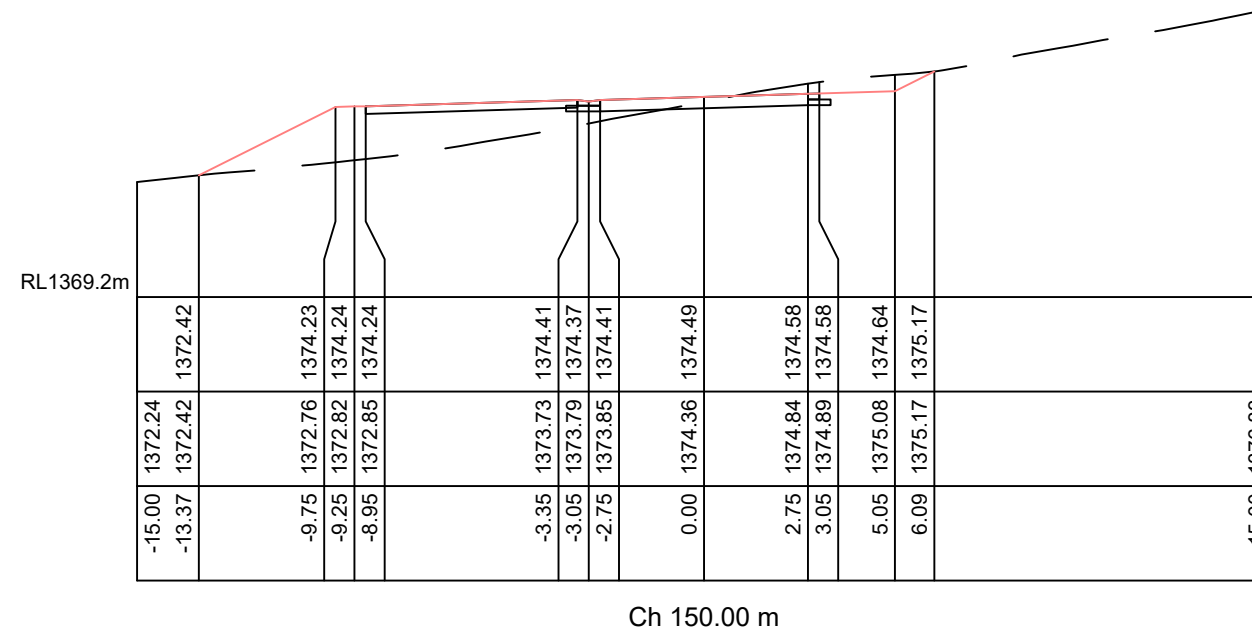
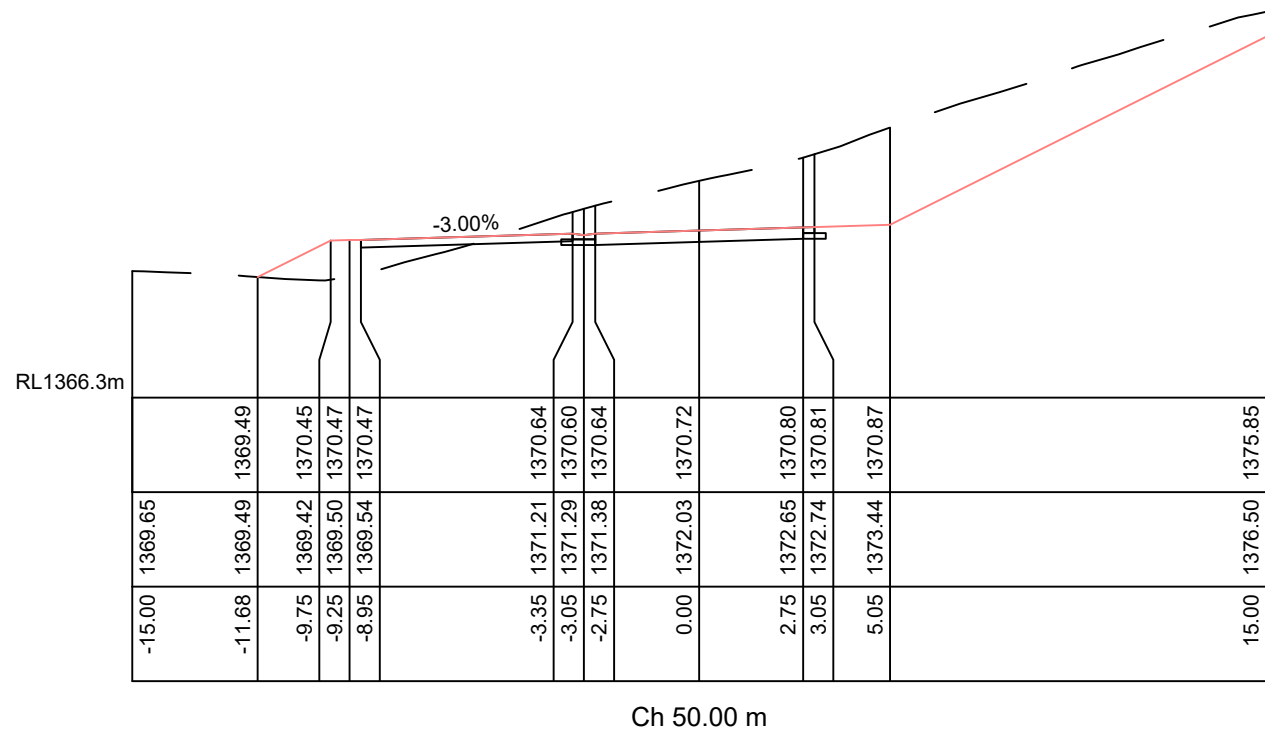


Proposed Golf Course Subdivision  
 THREDBO NSW 2625  
 Road Long Section Ch180 to Ch360

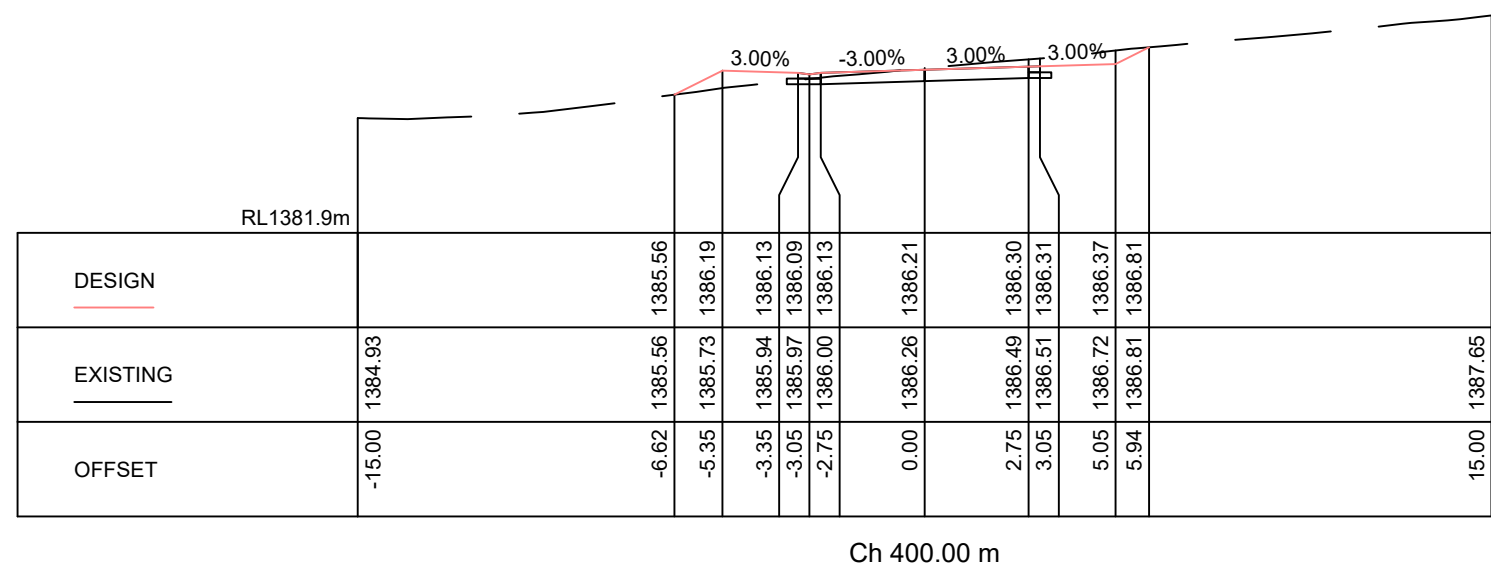
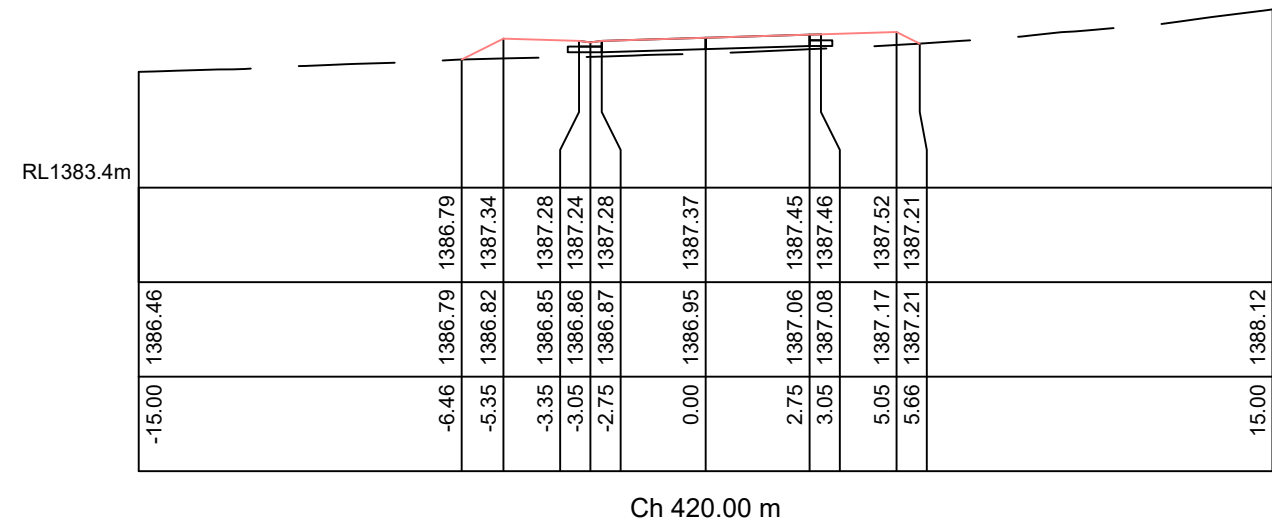
DATE: 27/07/2023  
 JOB NUMBER: U-183-E  
 SHEET: 6 of 12







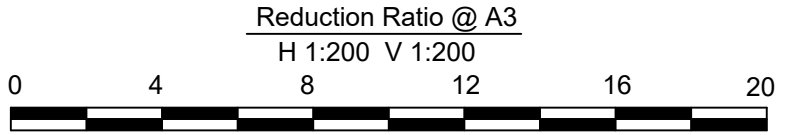




CLM CIVIL Engineering  
 205 Bobundara Road  
 BERRIDALE NSW 2628  
 PH: 0427 886 623  
 www.clmcivil.com.au

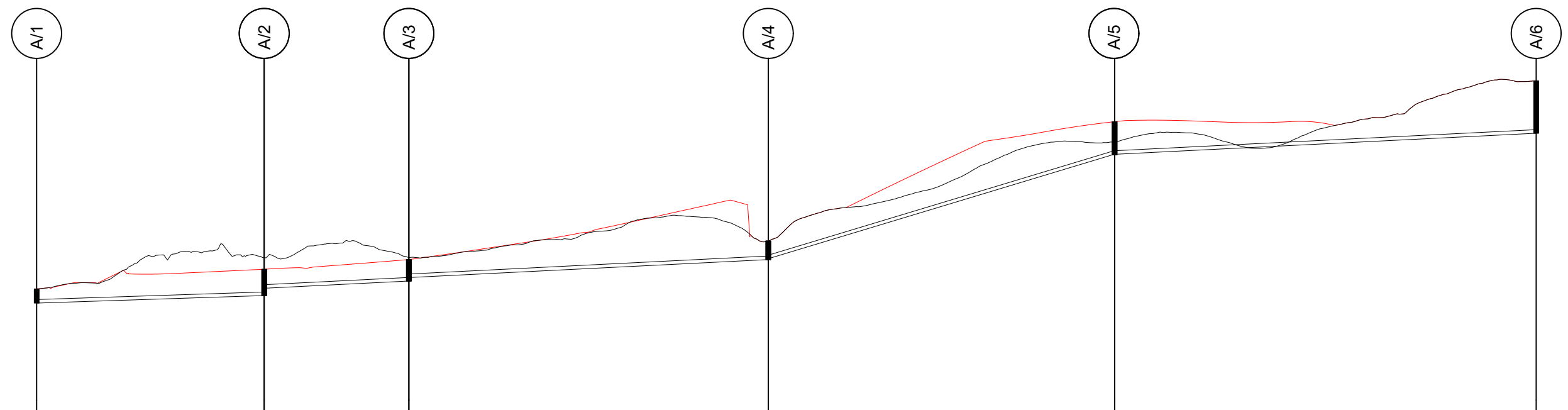


Robert Staples & Associates  
 Staplescorp Pty Ltd ABN 42 619 974 467  
 Consulting Engineers and Project Managers  
 Email: robertstaples@spin.net.au



Proposed Golf Course Subdivision  
 THREDBO NSW 2625  
 Road Cross Sections Ch400 to Ch420

DATE: 27/07/2023	
JOB NUMBER	SHEET
U-183-E	10 of 12



PIPE DETAILS SLOPE/GRADE	150Ø PVC 1:150.8		150Ø PVC 1:100.0		150Ø PVC 1:100.0		150Ø PVC 1:16.6		150Ø PVC 1:100.0	
DATUM RL 1361.1										
DEPTH TO INVERT	0.599	1.107	0.800	0.903	0.757	0.787	0.750	1.366	1.373	2.208
INVERT LEVEL	1369.083	1369.400	1369.708	1370.012	1370.158	1370.914	1370.952	1375.349	1375.343	1376.230
FINISHED SURFACE	1369.683	1370.508	1370.916	1370.916	1371.702	1371.702	1376.716	1376.716	1376.438	1378.438
EXISTING SURFACE	1369.683	1371.000	1371.000	1371.000	1371.702	1371.702	1375.873	1375.873	1378.438	1378.438
CHAINAGE	0.000	47.880	30.441	78.321	1371.000	153.950	226.827	315.525	315.525	315.525
		47.880		75.630		72.877		88.698		

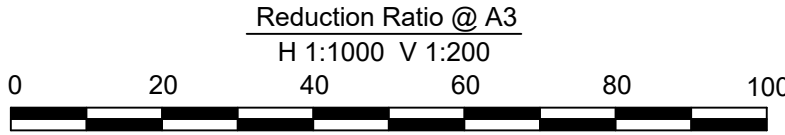
SEWER LONGITUDINAL SECTION FOR LINE A



CLM CIVIL Engineering  
 205 Bobundara Road  
 BERRIDALE NSW 2628  
 PH: 0427 886 623  
 www.clmcivil.com.au

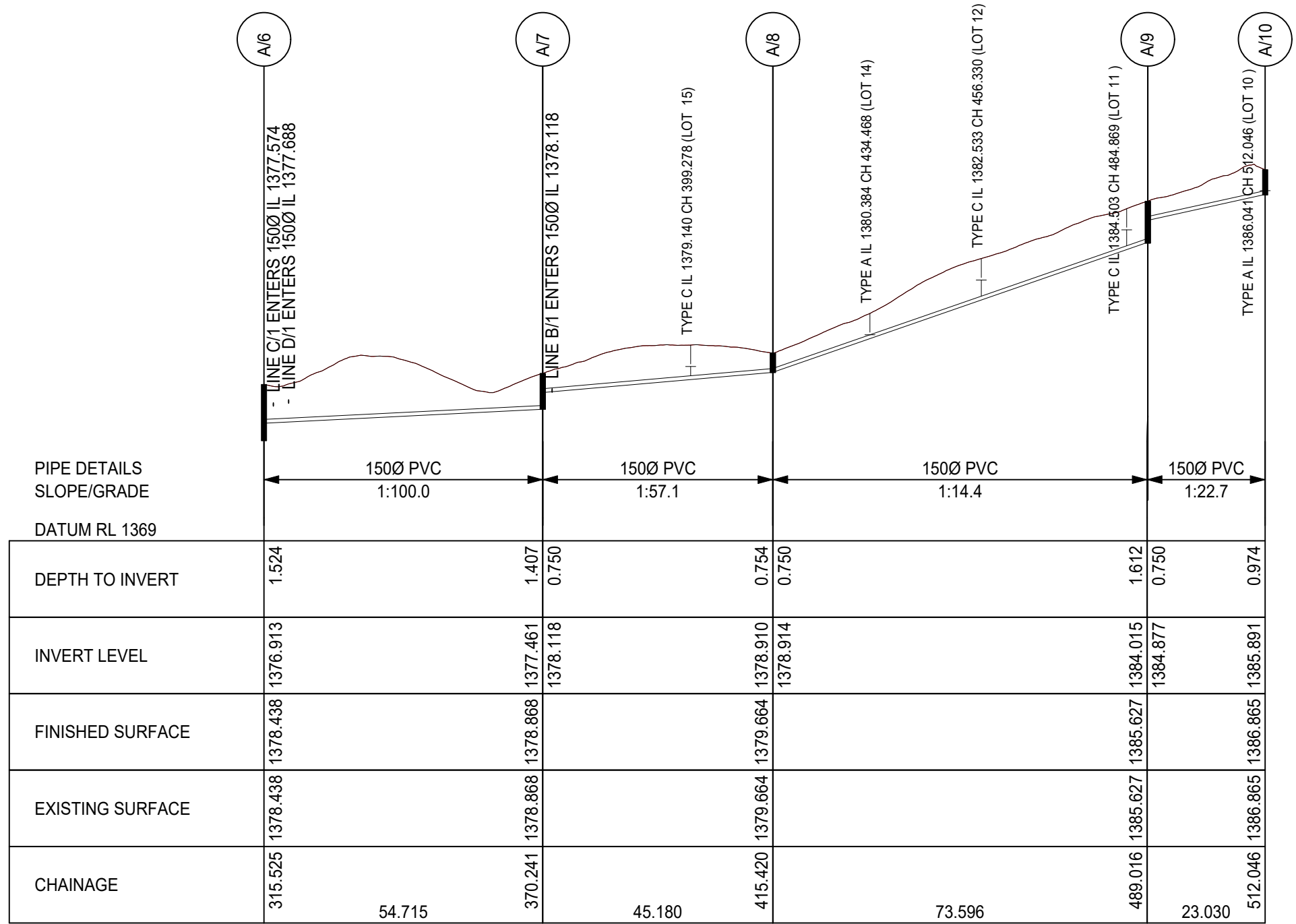
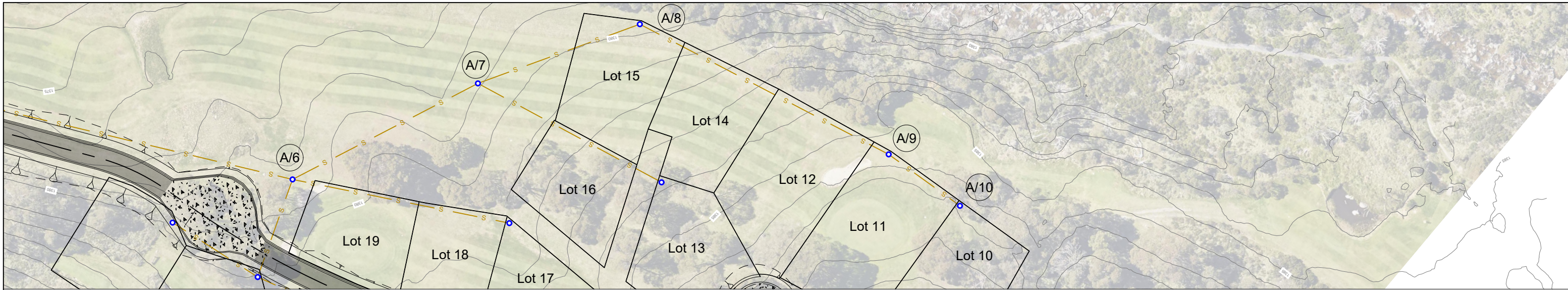


Robert Staples & Associates  
 Staplescorp Pty Ltd ABN 42 619 974 467  
 Consulting Engineers and Project Managers  
 Email: robertstaples@spin.net.au



Proposed Golf Course Subdivision  
 THREDBO NSW 2625  
 Sewer Long Section - A/1 to A/6

DATE: 27/07/2023  
 JOB NUMBER: U-183-E  
 SHEET: 11 of 12



SEWER LONGITUDINAL SECTION FOR LINE A